

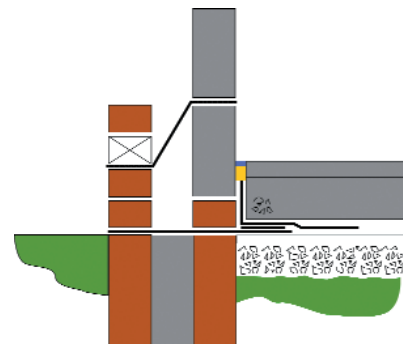
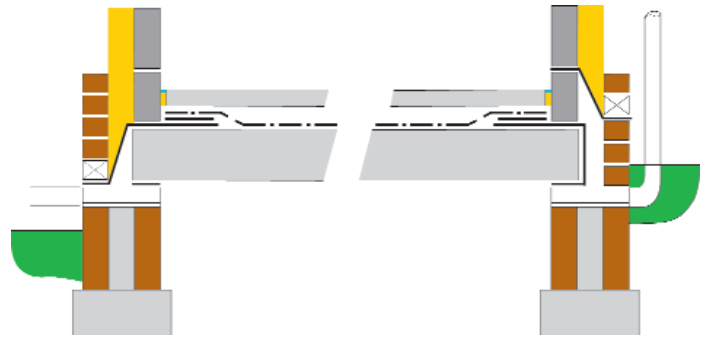
Protech Super Methane & Radon Gas Barrier Membrane

Description

Protech Super is a high performance, reinforced, polyethylene gas resistant membrane, with a 12 micron aluminium foil core that protects structures from the ingress of Methane (CH₄), Carbon Dioxide (CO₂) and Radon (Ra).

Application

Protech Super can either be tape jointed using a 30mm double sided, cross linked butyl tape, or alternatively can be welded using a hand held or automatic hot air gun. Pre-fabricated welded panels complete with air channel, can be supplied to individual plot sizes on request.



Typical Properties

- Roll Length 50m or 25m
- Width 2m
- Weight 0.37kg/m²
- Thickness 0.4mm
- Colour Green / Silver

Please contact our Technical department should you require further information or project specific application details

BSI Plus

Physical Properties	Value	Test Method
Tensile Strength	10.5 kN/m	BS4415 Part 2
Nail Tear Resistance	160N	MOAT:5.4.1
Moisture/Vapour Transmission rate	<0.01g/m ² /24h	BS 3177
Methane Permeability	<0.001	

SCP CONCRETE SEALING TECHNOLOGY LTD

Crowbush Farm Business Park, Luton Road, Toddington, Beds LU5 6HU United Kingdom

Telephone: +44(0)1525 872700.

Facsimile: +44(0) 1525 871019

Email: info@scpwaterproofing.com

Web: scpwaterproofing.com